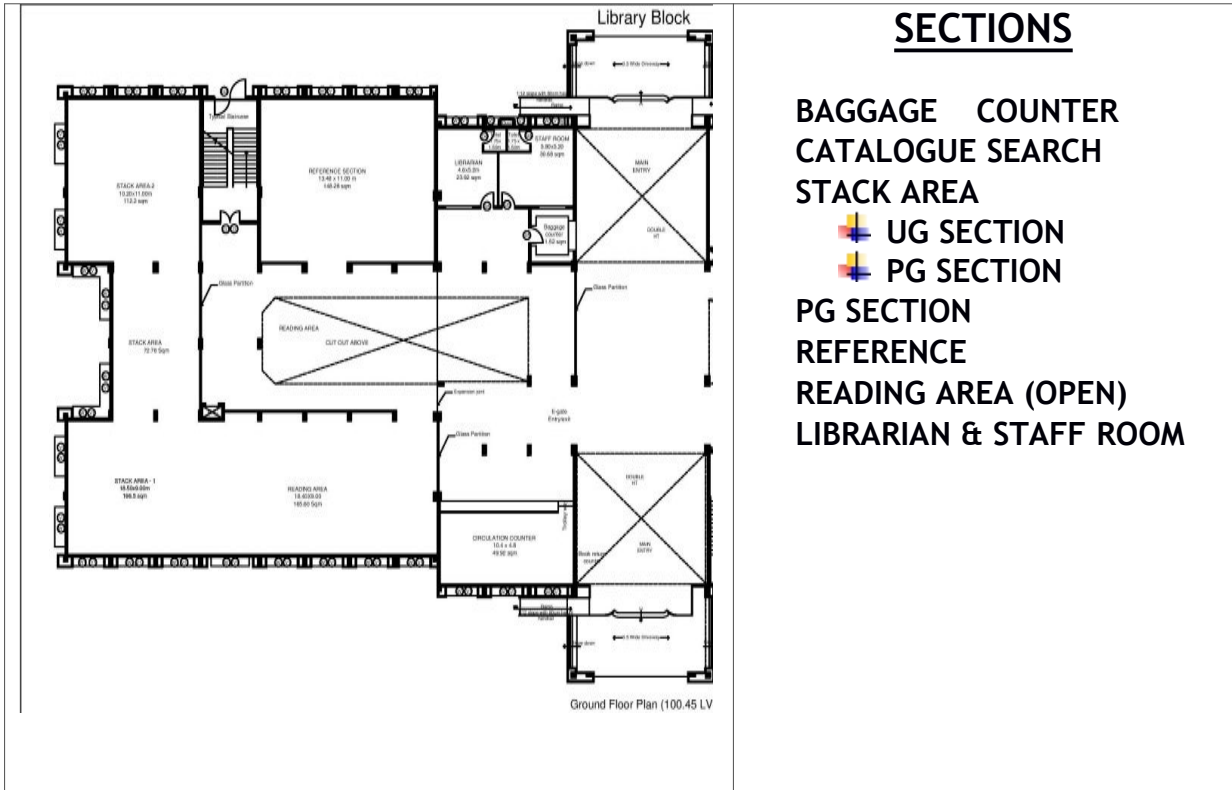


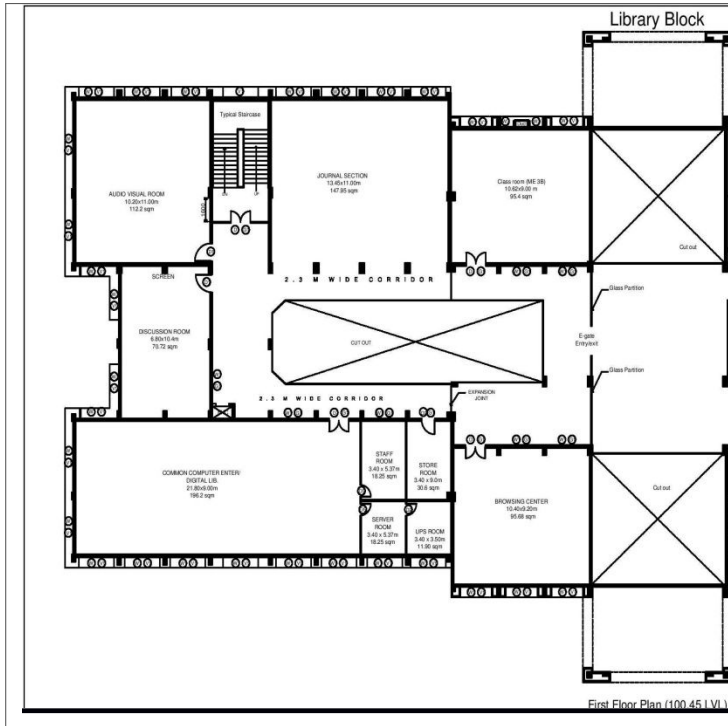
I. FLOOR MAP OF CENTRAL LIBRARY

TOTAL AREA: 1764 sq.mt

GROUND FLOOR



FIRST FLOOR



SECTIONS

- JOURNALS
- COMMON COMPUTER CENTRE
- DIGITAL LIBRARY
- LANGUAGE LAB
- DISCUSSION ROOM
- SEMINAR HALL